

**GSM SAVE** □

□

**GSM-WT201** □

□

**Wireless Terminal / Fixed Cellular  
Terminal** □

□

□

**USER GUIDE**

# **GSM Wireless Terminal (1 Way)**

# User Manual for Model: WT-201 GSM Wireless Terminal (1 Way)



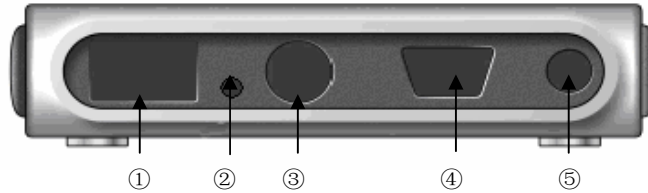
The WT-201 Terminal Incorporates



Map 1 Mains frontal map

## LED indicators (From left to right)

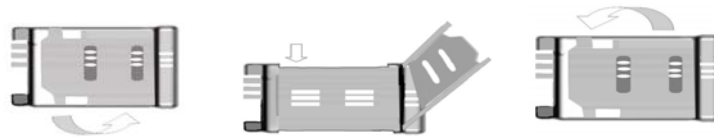
- LED1** - Network indicator (Flashing once in one second indicates that the terminal is on GSM network. Being dead or being lit for a long time indicates that the terminal has failed to login onto GSM network)
- LED2** - Power indicator (it's lit while power source is connected correctly)
- LED3** - Warning indicator (Staying lit more than 10 seconds indicates that the terminal can't work in gear. Staying lit less than 10 seconds or flashing indicate that the terminal is dealing with short message)\_
- LED4** - Working indicator (staying lit when handset has being lift or hand-free key had been pressed)
- LED5** - Signal indicator (The flashing speed indicates signal strength. The details refer to "Inquire Signal Quality and Software Version" on page 4)



**Map 2 the rear connection map to mains**

- ① **Phone port:** Connecting to telephone (Two telephone can be connected at the same time).
- ② **Standby port**
- ③ **Power port:** Make the flat side of power adapter plug be upturned and push it in
- ④ **Standby port**
- ⑤ **Antenna port**

➤ **Installing the SIM Card**



**Proceed as follows:**

1. Slide back the SIM door and lift it up
2. Slide the SIM card into the SIM door making sure that the clipped corner of the SIM card lines up with the clipped corner of the SIM holder
3. Close the SIM door
4. Slide the SIM door to lock the SIM card in place

➤ **Install The Terminal**

**Installation Condition**

Require 220v AC power. GSM signal can cover the area where the terminal is placed. Signal quality affects voice quality direct.

**The installation for connecting to ordinary telephone direct**

1. Install the SIM card proceeding as “Installing the SIM Card” on page 3.
2. Connect one end of the telephone line to “Telephone port” and the other end connect to a telephone.
3. Install the antenna and power supply well. The distance between telephone and terminal is 1.5m at least.
4. Connect one end of the power adapter to “Power port” and another end connect to 220v AC power. About 10-45 seconds later, the terminal works in gear (The login time is different according to local network).



The later four digits are software version code: for example 4060 indicates the software version code is 4.06.

## ➤ Signal Quality

User can judge the signal quality according to the flashing speech of network indicator (LED1).

Flash once in four seconds: signal is good

Flash once in two seconds: signal is weaker

Flash once in one second: signal is very weak, the quality of the voice is poor, please check the terminal.

## ➤ Making Calls

1. Lift the handset or press “hand-free” key, you will hear dialing tone, then you can dial the telephone numbers you want to call.
2. Dialing: dial the telephone numbers you want to call
3. On completion of dialed digits, you can press “#” to transmit telephone numbers. If you don't dial any key for continual 6 seconds during the dialing, the terminal transmits the dialed telephone numbers automatically.
4. When it is necessary to register cost, the terminal sends out anti-polarity signal (the signal is used to register cost by register cost equipment). During a call, dial digital key or “\*” or “#” to output DTMF.
5. If the calling party or called party hang up, the terminal stops sending out anti-polarity signal.
6. If users dial barred numbers, telephone will give out the sound of three-time toot to ask the user to hang up.

## ➤ Answering Incoming Calls

When some calls are coming in, if the connected telephone has the function of displaying incoming calls, the telephone rings and displays the incoming telephone numbers. Now users can lift the handset or press “hand-free” to answer the call.

## ➤ Adjusting the Volume of Voice

Lift the handset.

Dial “\*33XY#”, and then hang up when hear the sound of toot.

X and Y both belong to the digits that range from 1 to 5. X indicates microphone volume. Y indicates speaker volume. Level 1 is the lowest volume and level 5 is the highest.

## ➤ Technical Specification

1. Working condition  
Environment temperature: 0~+50°C  
Relative humidity: 10%~95%  
Air pressure: 86~106kpa  
Environment yawp: ≤60dB (A)
2. Working frequency: GSM900MHz/GSM1800MHz
3. Stability of frequency: better than 2.5PPM
4. Signal sensitivity: -103dBm
5. Transmit power: <2w
6. Power: 220v ± 15% AC
7. The max distance between terminal and telephone: 100M

## ➤ The Instructions for Terminal's Running Status

1. The instruction for initializing terminal  
When LED2 is lit, the terminal begins to initialize. If LED1 and LED4 are flashing simultaneously, the terminal is searching for GSM network. About 15~45 seconds later, the telephone rings which indicates that the process of initializing terminal finishes. If LED3 stays lit, initialization is unsuccessful. On this condition user can set parameters for the terminal but the terminal can't be used to make any calls. If users dial telephone numbers, LED3 will flash and the telephone will give out the sound of three-time "toot" to ask the user to hang up.
2. While users dialed barred numbers or other error numbers, the telephone gives out the sound of three-time "toot" to indicate that user should hang up and redial.
3. While you are lifting the handset and don't dial any key for continuous 15 seconds or the nobody answer the dialed telephone for 90 seconds after the called telephone has ringed, the telephone will give out the sound of three-time "toot" to indicate the user to hang up. If the user doesn't hang up for a long time, all indicating sound will be ended after 1 minute.
4. While calls coming in, work indicator flashes. If user answers the call, the work indicator stays lit.
5. When the handset is lift, working indicator (LED5) stays flashing until user hangs up.
6. When SMS is coming, warning indicator (LED3) and working indicator (LED5) both stay lit that indicates that the terminal are dealing with SMS.
7. If LED3 stays flashing and the telephone gives out the sound of three-time "toot", it indicates that the terminal is on the warning status. Please hang up.

➤ Familiar Trouble and Troubleshooting

Phenomena	Trouble	Trouble Shooting
Warning indicator stay lit for a long time	Failed in login onto GSM network	<ol style="list-style-type: none"> <li>1. The signal is too weak Please move the terminal to the place where signal is stronger.</li> <li>2. Check whether antenna is connected well.</li> <li>3. SIM card is locked. Please contact the service provider.</li> </ol>
Signal indicator flashes fast	Signal is too weak	<ol style="list-style-type: none"> <li>1. Check whether antenna is connected well.</li> <li>2. The signal is too weak Move the terminal or antenna to the place where signal is strong.</li> </ol>
Power indicator isn't lit	Having not connect to power supply or there is some trouble with power adapter	<ol style="list-style-type: none"> <li>1. Check whether the adapter is connected well.</li> <li>2. There is some trouble with the power adapter Please contact the provider of the terminal.</li> </ol>
Only free numbers can be called out	The residual money on SIM card is too less	Add money to the SIM card subscriber
Can't hear sound during calls	The malfunction on the telephone	Change the connected telephone with a good one
Poor voice quality during calls or there is echo during calls	The voice volume is too high or the signal of network is too weak.	<ol style="list-style-type: none"> <li>1. Adjust voice volume to be lower.</li> <li>2. The local signal is too weak. Move the terminal to the place where signal is stronger.</li> <li>3. Make the antenna is longer from the telephone</li> <li>4. The voice quality of the connected telephone isn't good. Change the connected telephone</li> <li>5. Trouble on the GSM network.</li> </ol>
No ringing sound	The malfunction on the telephone	<ol style="list-style-type: none"> <li>1. Malfunction on the connected telephone</li> <li>2. Malfunction on terminal. Please contact the provider of the terminal.</li> </ol>
Incoming calls can't be answered	The connected telephone does not match the terminal or forbidding answering incoming calls is set	<ol style="list-style-type: none"> <li>1. Change the connected telephone with a suitable one.</li> <li>2. Forbidding answer incoming calls is set up, please contact the service provider.</li> </ol>